



WOMEN'S
FOUNDATION
OF MISSISSIPPI

2020 Annual Report

2020 reminded us just how vital our mission of economic security is for women in Mississippi. None of us could have imagined the challenges the year would bring, but with your help, we were able to respond robustly and show the power of community, giving, and neighborly love that so many of us have come to expect from Mississippians. Because of you, we are strong and helping to meet the needs of Mississippi's women and girls. We hope this annual review of our work from this past year fills you with pride - it should! YOU helped make it happen.

In the wake of the pandemic, we immediately responded by talking with our dozens of grantee partner organizations statewide to understand their needs. Thanks to the generosity of so many of our private foundation, corporate, and individual donors, we implemented a rapid response grant making program and awarded more than \$160,000 to over 30 organization to help with critical needs during the crisis. Additionally, we conducted our annual grant making program - including new grants and evaluation of existing grantee projects - and we awarded \$270,000 in annual grants to eleven Mississippi-based nonprofits directly serving the state's women and girls.

Like so many companies and nonprofits, we had to adapt to the virtual life that 2020 brought with it. Because we were able to quickly get our online capabilities up to speed, many of our community education and engagement events still occurred in a virtual setting. Programs like Thrive @ Work and our board training session for women, She's On Board moved online to reach those they were designed to benefit. In 2020, we continued our Mississippi Women's Policy Institute - a fellowship program to help develop women leaders in the policy advocacy space - and supported legislative interns through our partnership with Millsaps College.

When Women Thrive, Mississippi Thrives



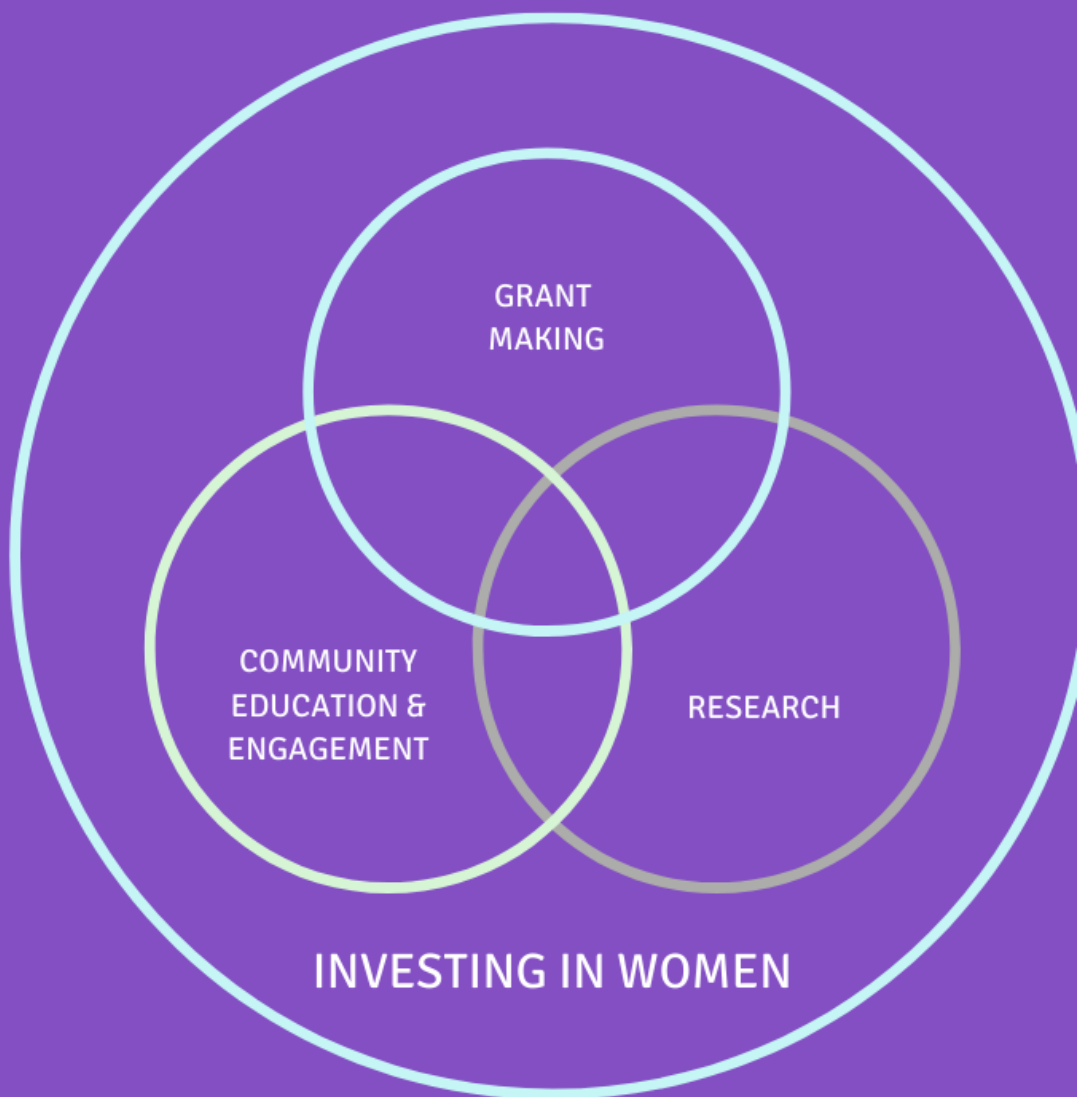
Tracy DeVries
EXECUTIVE DIRECTOR



Vonda Reeves
2020 BOARD CHAIR

How We Make An Impact

By combining resources from so many funders, including private foundations, individuals, and corporate donors, we create change and transform communities through grant making, community education and engagement, and research. By investing in women and girls, we are investing in all of Mississippi.



When women are economically secure, safe, and healthy, so are Mississippi's families and communities.

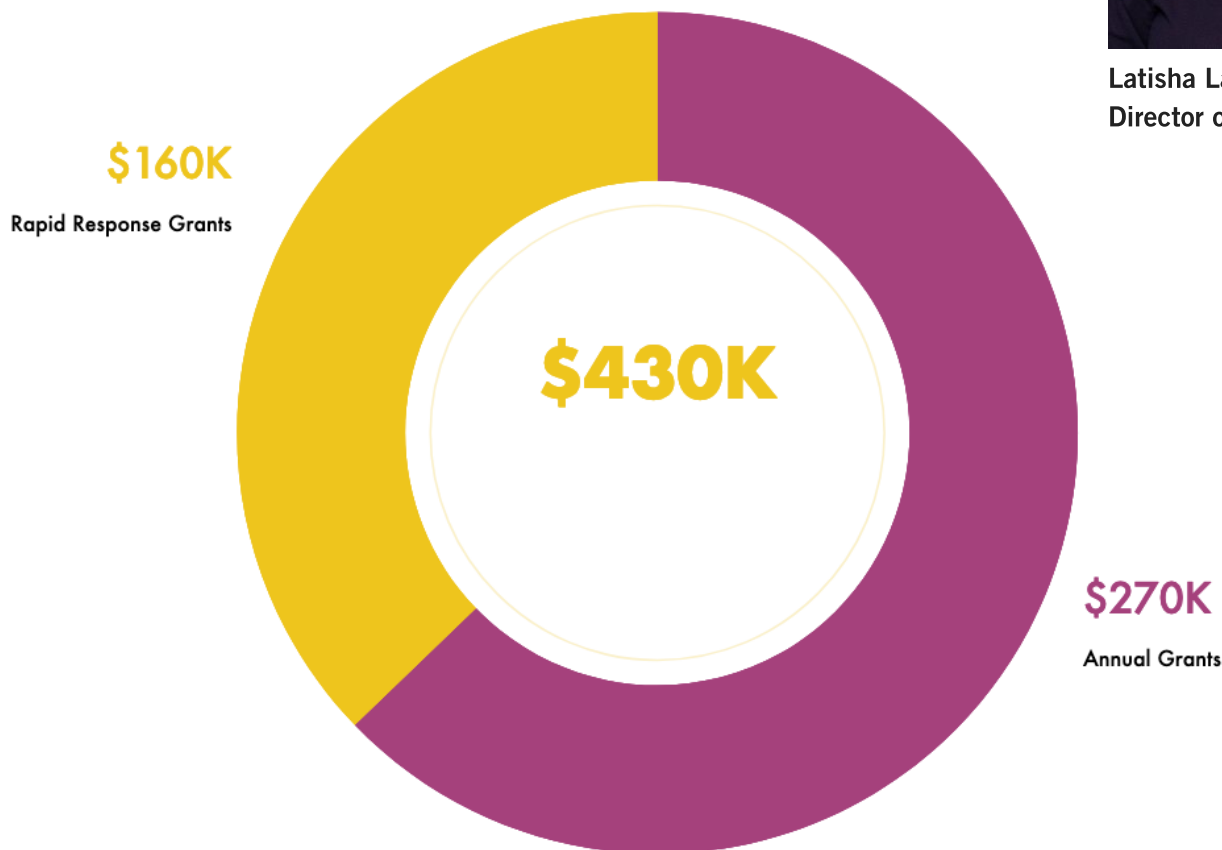
When
Women Thrive
Mississippi Thrives

Grant Making

2020 was a tough year for everyone, but the Women's Foundation of Mississippi faced the challenge head on. The Foundation understood that the women and families served by our grant partners needed immediate assistance to maintain their humanity during the height of the pandemic. We also understood that our annual grant making work could not cease even while the world was shutting down. Not working was not an option. To fulfill our mission of economic security for women, we had to be flexible, compassionate, and responsive. As the Director of Grants Programming, I reached out to our partners across the state to learn about their needs and priorities. We were hearing about a wide variety of needs like emergency food assistance, hygiene items and protective equipment, assistance with rent and utilities, help with childcare, technology upgrades, and support for victims of domestic violence. Using our tested and trustworthy grant making network, we were able to get the first round of grants out the door less than one month from our initial contact with grantee partners. To date, we have awarded more than \$160,000 in rapid response funding. Additionally, we also were able to maintain our annual grants program and invest in our established focus areas. With more than 30 organizations receiving grants from the Women's Foundation, 2020 was one of our busiest years. In all, we were able to award more than \$430,000 in grants in 2020 alone. Despite the pandemic, WFM staff, and especially its grants committee members, executed a successful 2020 grant cycle. Grant committee members took time out of their busy schedules to read and review applications, conduct virtual site visits, and make funding recommendations. This past year would not have been possible without their valuable input and assistance.



Latisha Latiker
Director of Grants Programming



Grant Making

We continue to manage a robust grants program and, combining our rapid response and annual grants, we awarded funds to more than 30 grantee partners throughout 2020. As you can see from our map of grantees on the next page, we invest in every region and corner of the state. Our investments this past year fell under several focus areas:

- ***Rapid Response Grant Funding***
- ***Access to Opportunity: Community Colleges***
- ***Better Futures: Two Generation***
- ***Healthy Women***

Our work on community college campuses and other institutions of higher learning continues to make a difference for student parents earning degrees and certificates. We have supported grant programs at nearly all of the state's community college campuses at one time or another, and we have seen graduation rates at or near 80% for the students participating in the programs we support. By supporting things like mentorship programs, childcare assistance, transportation resources, and emergency funds, our work is transforming lives and communities. Additional community college investments are expected in 2021, and we look forward to sharing this exciting work with you.



2020 RAPID RESPONSE GRANTEES

- 01 Coahoma County Diaper Bank
- 02 Coahoma Community College
- 03 MS Coalition Against Domestic Violence; **Statewide**
- 04 Institute for the Advancement of Minority Health
- 05 Lanier Clinic
- 06 MS Black Women's Roundtable
- 07 Disability Rights Mississippi
- 08 UMMC – Office of Diversity and Inclusion
- 09 Love Me Unlimited 4 Life
- 10 Mississippi Center for Justice
- 11 Methodist Children's Home
- 12 Jones College
- 13 Mississippi Low-Income Childcare Initiative (MLICCI)
- 14 Extra Table
- 15 Mississippi Immigrants Rights Alliance
- 16 United Methodist Choctaw Mission

2020 GRANTEES

- 17 St. Gabriel Mercy Center, Inc
- 18 Institute for the Advancement of Minority Health
- 19 Plan A Health, Inc.

2019 GRANTEES

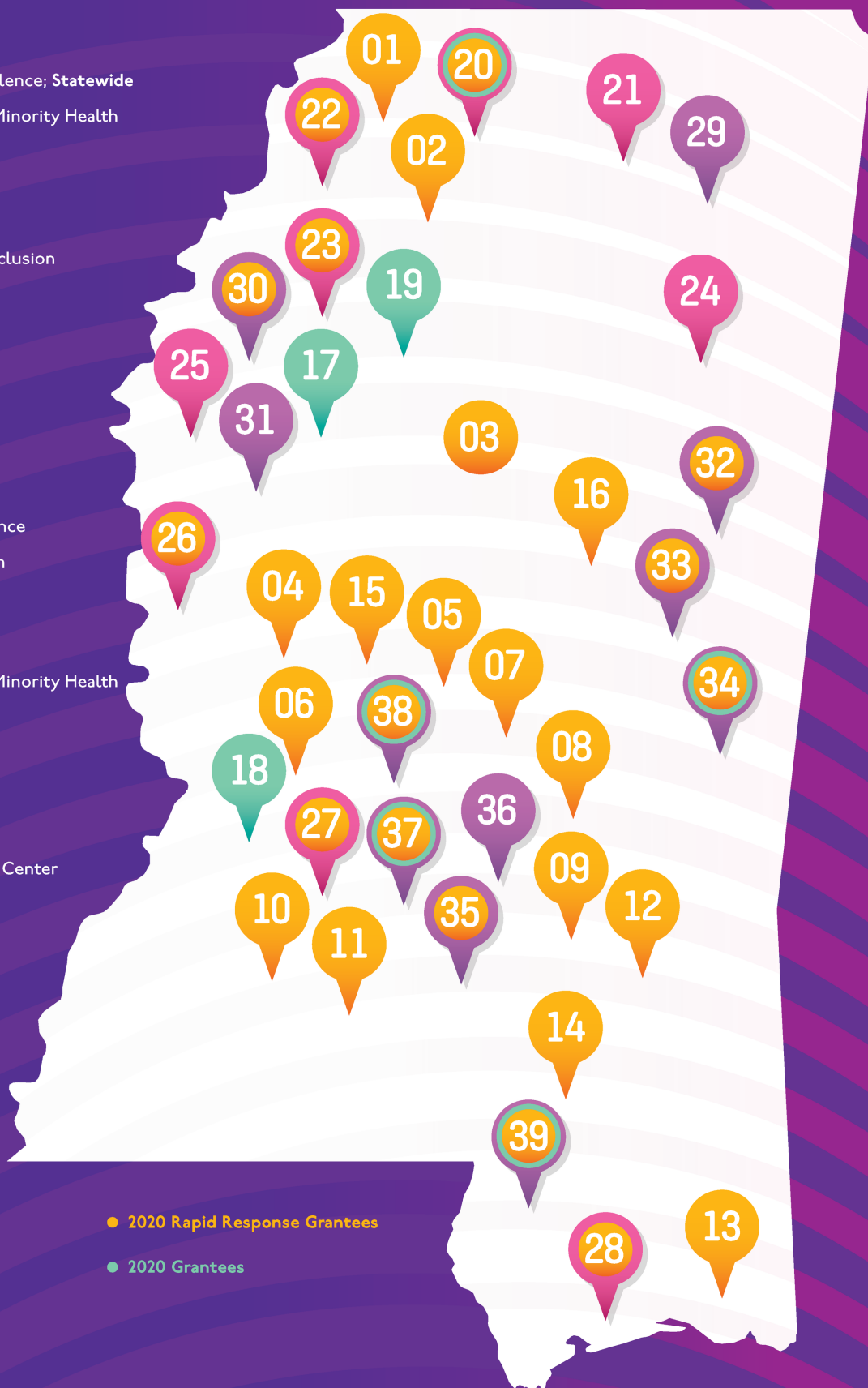
- 20 ● ● Spring Initiative
- 21 Exchange Club Family Center
- 22 ● Tutwiler Community Education Center
- 23 ● Delta Health Center
- 24 Mississippi State University
- 25 Vox Press
- 26 ● Cary Christian Center
- 27 ● Hinds Community College
- 28 ● Magnolia Medical Foundation

2018 GRANTEES

- 29 Itawamba Community College
- 30 ● We2Gether Creating Change
- 31 Girls Write The World
- 32 ● East Mississippi Community College
- 33 ● Mississippi State University | Meridian Campus
- 34 ● ● 2nd Chance MS
- 35 ● Children's Defense Fund | SPARK
- 36 University of Mississippi Medical Center | EmpowerU
- 37 ● ● Teen Health Mississippi | LinkedUp
- 38 ● ● The Lighthouse | Black Girl Projects
- 39 ● ● Pearl River Community College

● 2020 Rapid Response Grantees

● 2020 Grantees



**WOMEN'S
FOUNDATION**
OF MISSISSIPPI

2020 Annual Grants

Two-Generation Better Futures Focus Area

St. Gabriel Mercy Center Mound Bayou, MS



Using the internationally recognized “Parents as Teachers” model, St. Gabriel Mercy Center offers optimal early childhood development learning opportunities that also focus on the health of young children, while supporting and engaging their parents or caregivers. Their certified Parent Educators provide in-home services to children and families during the first three years of the child's life to assess their overall development. A ten-week parenting curriculum is also being used at the same time.

Spring Initiative Clarksdale, MS

Spring Initiative empowers young people in the Mississippi Delta to beat the odds, access the opportunities they deserve, and build successful, happy and hopeful lives for themselves. This grant supports parents and students with the personalized support they need to overcome and thrive. Both mothers and their children will be supported through a two-generation approach.



2020 Annual Grants

Two-Generation Community College Focus Area

2nd Chance MS Oxford, MS

Over the last several years, 2nd Chance MS has built strong programs and long-standing relationships with Community College Adult Education and Workforce Coordinators across the state. They will be using their expertise to support female caregiver students with children under the age of 13 through wrap-around services, helping them to complete their degree and certificate programs.



Pearl River Community College Poplarville, MS

The goal of Making WAVES (Women Achieving Victories and Educational Success) at Pearl River Community College is to recruit and equip non-traditional and economically vulnerable families from within the six-county service area, providing two-generation educational programs. This two-generation approach to degree completion is designed to meet the needs of parenting students and their children.



2020 Annual Grants

Healthy Women Focus Area

Institute for the Advancement of Minority Health Jackson, MS



The Institute for the Advancement of Minority Health is a non-profit, public health organization dedicated to improving the lives of vulnerable, disadvantaged, minority individuals in Mississippi. This grant supports 'Love Yourself First: An STD Risk Reduction Program' for African American women and girls in and around Hinds County.

Plan A Mobile Health Inc. Mississippi Delta

Plan A Health addresses health care disparities in rural communities through mobile clinics that provide care directly to underserved communities with needs not being met by the existing health care infrastructure. Their mobile clinic will open its doors soon, and they expect to see 2,000 patients the first year, providing reproductive health services & primary care screenings free of charge.



2020 Annual Grants

Healthy Women Focus Area

The Lighthouse | Black Girl Projects

Jackson, MS



The Lighthouse | Black Girl Projects will implement programming focused on sexual reproductive health and relationship well-being with the assistance of Making Proud Choices curriculum for high school and college-aged girls/young women and boys/young men. The grant will focus on African American youth and help to provide services in Hinds and Copiah Counties.

Teen Health Mississippi

Jackson, MS

Through LinkedUp, Teen Health Mississippi works with high school-based health clinics to increase their capacity to support their students with access to sexual and reproductive health education and services as they make the transition to college and/or the adult healthcare system. Teen Health will continue its partnerships with Lanier High School, South Delta High School, Terry High School and Jim Hill High School.



2020 Annual Grants

Access to Opportunity: Community College Focus Area

In collaboration with the W.K. Kellogg Foundation, the Women's Foundation of Mississippi is providing funding to three pre-determined community college campuses as part of a project to better link female students with jobs post-graduation and to evaluate the results of the supportive services offered. Each site has an opportunity to renew funding over the next three years based on results and their interest in doing so.

Mississippi Gulf Coast Community College

Biloxi, MS

The project provides wrap-around services to women and her children in the MGCCC district to secure better futures for both generations. Services offered will include high quality early childhood development and childcare, transportation, personal protection equipment, work tool kits, background checks, and required job placement health screenings to secure employment. Additionally, MGCCC will create pathways to employment by providing workforce training and/or high school equivalency prep and make available financial literacy training to 50 women.

Coahoma Community College

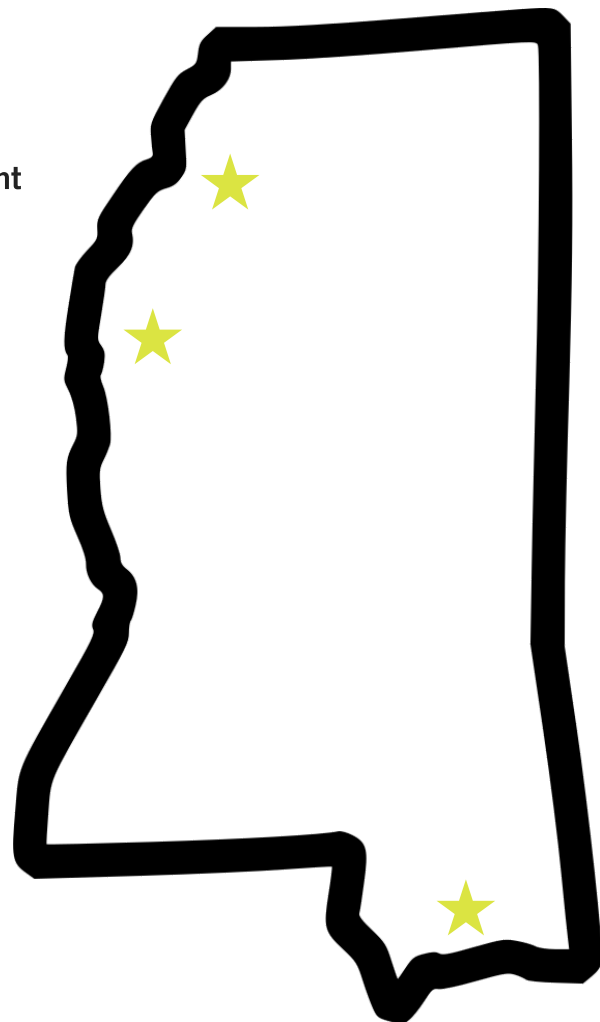
Clarksdale, MS

The Coahoma Community College Workforce Women's Emergency Fund (CCCWEF) will provide direct assistance for wrap-around and childcare support services, along with financial literacy classes taught in partnership with community leaders. Coahoma will also work directly with local workforce partners to ensure that women are connected to jobs with livable wages. Coahoma Community College will assist 50 women and children per year in meeting a financial need in an effort to encourage the female students to remain in school and complete the academic semester.

MS Delta Community College

Moorhead, MS

With a full range of student wrap-around services also available, this project aims to eliminate the digital divide and assist parenting students in completing their degrees. The program will provide computers & internet access to 50 women who are enrolled in either Adult Education, a Career & Technical program, or a Workforce Development class. Having access to this technology will allow them to continue their education while staying home with their children. Financial literacy training and pathways to employment will be identified to help women secure a family sustaining wage and job.



COVID-19 Rapid Response Grants

No one could have known the challenges that 2020 would bring, but, because of your generosity and support, WFM was able to quickly adapt and implement a Rapid Response funding program to help meet the needs of Mississippi women and girls during the pandemic. When the crisis began, we communicated with our trusted grantee partners across the state. By hearing from them, we were able to quickly assess the situation on the ground and determine how we could most efficiently and effectively provide assistance where it was needed the most. Since the outbreak began, we have awarded more than \$160,000 in Rapid Response funding to organizations supporting women and girls in every corner of the state. Read about the impact we were able to create below.

Round One (\$55,000): Awarded April 2020:

- **Cary Christian Center; Cary, MS; \$5,000** – funding for PPE, hygiene items, at-home visits for moms and babies, food supplies
- **Coahoma Community College; Clarksdale, MS; \$5,000** – emergency funding to support female students at risk of dropping out to cover individual critical needs
- **East Mississippi Community College; Scooba, MS; \$5,000** – funding for a drive-through food pantry and an on-campus pantry including food and personal hygiene items
- **Hinds Community College; Raymond, MS; \$5,000** – funding for the SingleStop center that provides wrap-around services to at-risk students; technology needs
- **Jones College; Ellisville, MS; \$5,000** – emergency funding to support female students at risk of dropping out to cover individual critical needs
- **Magnolia Medical Foundation; Natchez, MS; \$5,000** – funding for mental health counseling for women in the Natchez Housing Authority; food and hygiene supplies
- **The Lighthouse: Black Girls Projects; Jackson, MS; \$5,000** – funding for mental health counseling for college-aged women
- **Spring Initiative; Clarksdale, MS; \$5,000** – funding to support direct assistance to families for rent, utilities, and other critical needs
- **Teen Health Mississippi; Jackson, MS; \$5,000** – funds to support the Teen Safety and Emergency Fund
- **Tutwiler Community Education Center; Tutwiler, MS; \$5,000** – funding to support the local manufacturing of PPE and medical gear including masks; food pantry supplies
- **Mississippi Low-Income Childcare Initiative (MLICCI); Biloxi, MS; \$5,000** – funding to support critical needs for childcare centers



Round Two (\$64,997): Awarded June 2020:

- **Cary Christian Center; Cary, MS; \$5,000** – in support of at-home visits for expecting moms
- **Magnolia Medical Foundation; Gulf Coast, MS; \$4,000** – funding for care packages including personal protective equipment and hygiene supplies for Gulf Coast families
- **Spring Initiative; Clarksdale, MS; \$5,000** - 25 personal, internet-connected devices for girls enrolled in Spring Initiative's programs
- **We2Gether Creating Change; Drew, MS; \$5,000** – funding to support direct assistance to families in the form of grocery money, rent and utility payments
- **MS Black Women's Roundtable; Jackson, MS; \$5,000** – funding to support childcare stipends for up to 50 children
- **MS Coalition Against Domestic Violence; Statewide; \$5,000** – supporting short-term financial assistance for victims of domestic violence in the state's 12 shelters
- **Love Me Unlimited 4 Life; Jackson, MS; \$5,000** – supporting direct financial assistance for Black, trans women
- **Delta Health Center; Leland, Ruleville, Moorhead, MS; \$5,000** – funding for packages including fresh fruit and vegetables in rural Delta communities
- **Lanier Clinic; Jackson, MS; \$4,997.50** – funding for fresh produce, shelf-stable food items, masks, hygiene resources and senior resources for more than 500 Lanier and Jackson area students and families
- **Disability Rights Mississippi; Jackson, MS; \$4,000** – funding to help families with children with disabilities during the pandemic such as childcare and transportation needs
- **UMMC – Office of Diversity and Inclusion; Jackson, MS; \$2,500** – supporting emergency relief for low-wage workers and students on the frontlines of the pandemic
- **Tutwiler Community Education Center; Tutwiler, MS; \$2,500** – funding for supplies and labor to make masks for community-area children and families
- **Mississippi Center for Justice; Jackson, MS; \$2,500** – support for a legal advocacy program to assist renters facing eviction during the pandemic
- **Methodist Children's Home; Jackson, MS; \$2,500** – supporting direct financial assistance in the form of grocery money, transportation assistance, and rent assistance
- **Institute for the Advancement of Minority Health; Ridgeland, MS; \$2,500** – funding to supply personal protective equipment for Black and Hispanic communities in Hinds County
- **Children's Defense Fund-Southern Regional Office; Jackson, MS; \$2,500** – supporting the Unita Blackwell Young Women's Leadership Institute (YWLI)
- **Mississippi State University – Meridian Campus; Meridian, MS; \$2,000** – supporting emergency food items for the campus's Bully Pantry



Round Three (\$32,500): Awarded September 2020:

- **Mississippi Low-Income Childcare Initiative; Biloxi, MS; \$5,000** - funding to support critical needs for childcare centers
- **MS Black Women's Roundtable; Jackson, MS; \$5,000** - funding to support childcare stipends for up to 50 children
- **Love Me Unlimited 4 Life; Jackson, MS; \$5,000** – supporting direct financial assistance for Black, trans women
- **Coahoma Co. Diaper Bank; Clarksdale, MS; \$5,000** - funding to support mothers with diapers and other products in Coahoma Co. and surrounding areas
- **Delta Health Center; Mound Bayou, MS; \$2,500** - funding for packages including fresh fruit and vegetables in rural Delta communities
- **Teen Health Mississippi; Jackson, MS; \$2,500** - funding to support the Teen Safety and Emergency Fund
- **Mississippi Coalition Against Domestic Violence; Jackson, MS; \$5,000** - supporting short-term financial assistance for victims of domestic violence in the state's 12 shelters
- **We2Gether Creating Change; Drew, MS; \$5,000** - funding to support direct assistance to families in the form of grocery money, rent and utility payments

Round Four (\$8,325): Awarded December 2020:

- **Mississippi Immigrants Rights Alliance (MIRA); Jackson, MS; \$2,775** - funding to support COVID testing and other resources for immigrant communities
- **Extra Table Food Bank; Hattiesburg, MS; \$2,775** - funding to support the purchase of fresh food to help feed needy people throughout the state
- **United Methodist Choctaw Mission; Philadelphia, MS; \$2,775** - funding to support resources for indigenous populations fighting COVID in Neshoba and Leake Counties





One of our Rapid Response Grants helped to keep kids enrolled in Spring Initiative's programs connected to the internet to continue learning remotely



EMCC Rapid Response

THANK YOU KIMBERLY
RUSH AND ALL
VOLUNTEERS!



Kimberly Rush at EMCC used the Rapid Response Grant they received to do a drive-through food pantry in Kemper County. She also provided supplies to female students at EMCC upon their return to campus



The Institute for the Advancement of Minority Health used its Rapid Response Grant to supply PPE and other healthcare supplies to partners in Hinds County



Virginia explains how our Rapid Response Grant with Disability Rights Mississippi helped her and her family navigate the pandemic

"I was able to use this grant for gas to go back and forth to appointments for my son, and for back-to-school items to help him learn in school."

—Virginia Barham



Tutwiler Community Education Center made and distributed masks throughout the community with support from our grant



Anita Bell-Muhammed holds computers purchased with WFM Rapid Response Grant Awards. Computers will be used by students at Hinds CC



Magnolia Medical Foundation team distributing critical supplies to women in Natchez



Our partners at Delta Health Clinic have been testing for COVID19. Our grant with them provided over 1,000 bags of fresh fruit and vegetables for the community

345

Number of Mississippi Teens who received Safe Sex Kits from Teen Health Mississippi through our Rapid Response Grant

??

Thanks so much for the help... Will you thank the people at the Women's Foundation for me? It will help out a lot. Thanks again for everything. ??

??

I would like to thank you all for paying the gas bill. I really appreciate this so much, it takes so much of the weight off of me this month. Thank you all so much. My daughter and I are proud to be a part of the Spring Initiative Family! ??



500 Lanier High School students received fresh produce, shelf-stable food, masks, and other hygiene items at a drive-through event



With their second Rapid Response Grant, Magnolia Medical Foundation distributed much-needed PPE and cleaning/hygiene items to Hispanic families on the Gulf coast

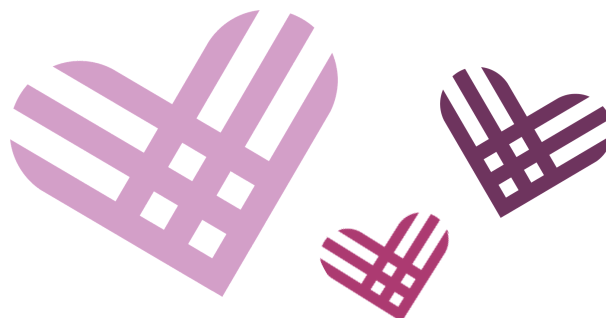
Rapid Response Grant Funding Donors

Anonymous
Leshia Agnew
Helen Ahrendt
Susan Anand
Sara Anderson
Helen Boone
Margaret Oertling Cupples
Sharon Turner-Davis
Inglish DeVoss
Gloria Dodd
Joyce Dortch
Anne Forbes
Heather Hanna
Therese Hanna
Natasha Hardeman
Katie Hathcock
Jane Hiatt
Rodney Hicks

Angela Johnson
Gloria Johnson
Christy D. Jones
Carla Kirkland
Holly Lange
Andre Lee
Grace and Shinn Lee
Nancy Loomer
Jackie Losset
Gloria Martin
Josh McCawley
Robin McHale
Trudy and Ed Moody
LoRose Moore
Frances Morrison
Wendy Mullins
Catherine Patterson
Susan Phillips
LaToya Porter

Barbara Powell
Karen Redhead
Vonda Reeves
Ashley Sanders
Jane Sanders
Julie Smoak
Linda Southward
Cynthia Stewart
Charu Subramony
Lynette Suttler
Grace Sweet
Jan Watson
Shanell H. Watson
Judy Weiner
Demetra Williams
Viva Lee Wilson

Atmos Energy
David and Lucille Packard Foundation
Jackson MS Alumnae chapter of Delta Sigma Theta
Jessie Smith Noyes Foundation
Ms. Foundation for Women
Regions Bank
Tara Health Foundation
W.K. Kellogg Foundation



Thank you!

Total Raised and Distributed: \$160,821.59



**WOMEN'S
FOUNDATION**
OF MISSISSIPPI

Real impact for women and girls

"The grant from the Women's Foundation of Mississippi allowed women we worked with in Natchez to ask those questions they had about the pandemic and their mental health, and to pick up resources and information that they could carry with them to build out their recovery and resilience and sustainability moving forward in difficult times."

-Dr. Erica Thompson

Magnolia Medical Foundation

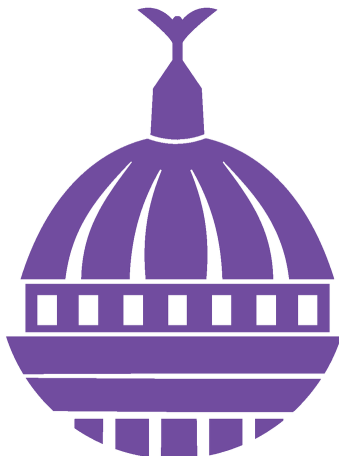
"During the early days of the pandemic, there was a lot of stress about from where our income would come - like all businesses and nonprofits. While there was uncertainty surrounding some of our funding sources, the Women's Foundation of Mississippi made it easy to access their rapid response grants. They made it possible to respond on the ground in our community in the ways that we knew would work. They didn't impose red tape and regulations; they just empowered us to do the work."

-Bianca Zaharescu

co-Founder, Spring Initiative

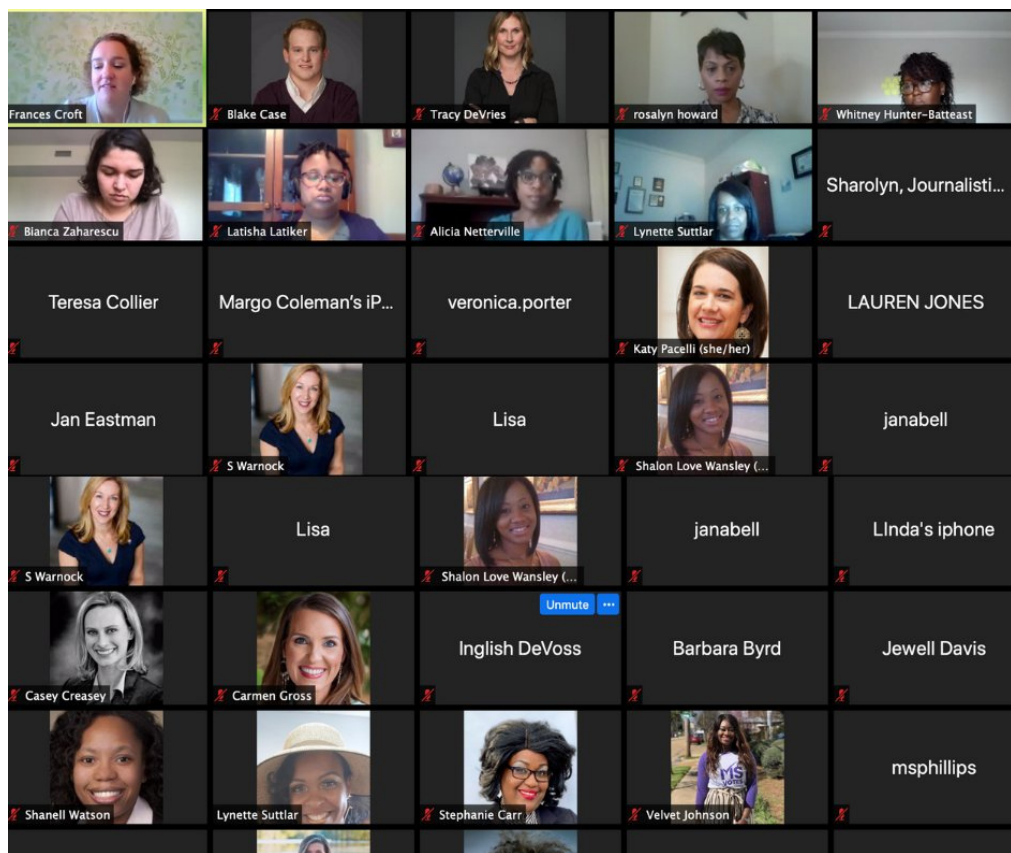
Women's Leadership Development

The Women's Foundation of Mississippi continued our partnership with Millsaps College this past year and supported internships for four young women at the Mississippi State Capitol during the 2020 session. By working with political caucuses and legislators to better understand the lawmaking process, these young women developed key skills that will be helpful in their future endeavors. Fellows included: **Ashley Chang, Olivia Edwards, Brenna Michael, and Julia Wicker.**



Women's Leadership Development

Even with the challenges we faced during the pandemic, our staff found ways to continue to support leadership development opportunities for women, including a virtual presentation of an advanced version of our women's Board training program: "She's On Board 2.0." This advanced version of our "She's On Board" program, introduced in 2018, allowed participants to take a deeper dive into nonprofit Board service and step confidently into Board leadership roles in Mississippi.



Women Belong In the Boardroom...

On November 13, 2020, we hosted our third annual "She's on Board" seminar with more than 50 women in virtual attendance. This was our first-ever presentation of the advanced version of the course, "She's On Board 2.0." We were glad to see so many returning participants from our first two years who were interested in further developing their Board skills. We were thrilled to have Balch & Bingham LLP back as the presenting sponsor of the event. We added this programming because we know that in order to make positive change for women and families, we need to have more women at the table - AND in the boardroom. The continuation of this program is in the plans for 2021, and we cannot wait to see the impact it will have in boardrooms across Mississippi. When more women are on Boards, they bring competitive skills, diversity of thought and strategy, and provide better stakeholder representation.

SHE'S ON BOARD 2.0

Women's Advanced Board Training Program

presented by:

BALCH
& BINGHAM LLP

Community Education & Engagement

Even though we couldn't be together in person like usual, we held our third annual Thrive @ Work program, in a virtual "from home" format on August 25, 2020. Alongside our corporate partners, we had a dialogue about positive workplace policies for women and their families. More than 75 people joined us as we redefined the definition of "power lunch." This conversation has never been more important than it was in 2020, as we all adjusted to working from home and the impact that created on working parents, particularly working mothers. We were lucky to be joined by a panel of experts. Molly Brasfield from the University of Mississippi Medical Center discussed creating optimal working environments, Lindsay Thomas Dowdle from Jones Walker LLP presented on creating workplace policies and procedures, Carol Harris from the Mississippi Development Authority brought information about women and minority small business loans, and journalist Anna Wolfe from Mississippi Today, discussed the gendered impacts of COVID-19 on women's jobs and health. Thank you to our corporate sponsors!

A promotional graphic for the 'Thrive @ Work FROM HOME' event. The background is purple with concentric circles. The text 'Thrive @ Work' is in a large, yellow and white script font, with a white house outline above the '@'. Below it, 'FROM HOME' is in white capital letters on a purple rectangular background. Further down, 'Interactive, Virtual Conversation With Experts.' is in white. On the right, there are two circular inset photos: one of a woman with curly hair in a green striped shirt working on a laptop, and another of a woman with short brown hair in a yellow sweater waving. At the bottom right is the Women's Foundation of Mississippi logo, which consists of a colorful circular icon and the text 'WOMEN'S FOUNDATION OF MISSISSIPPI'.

Featured Guests:



MOLLY BRASFIELD



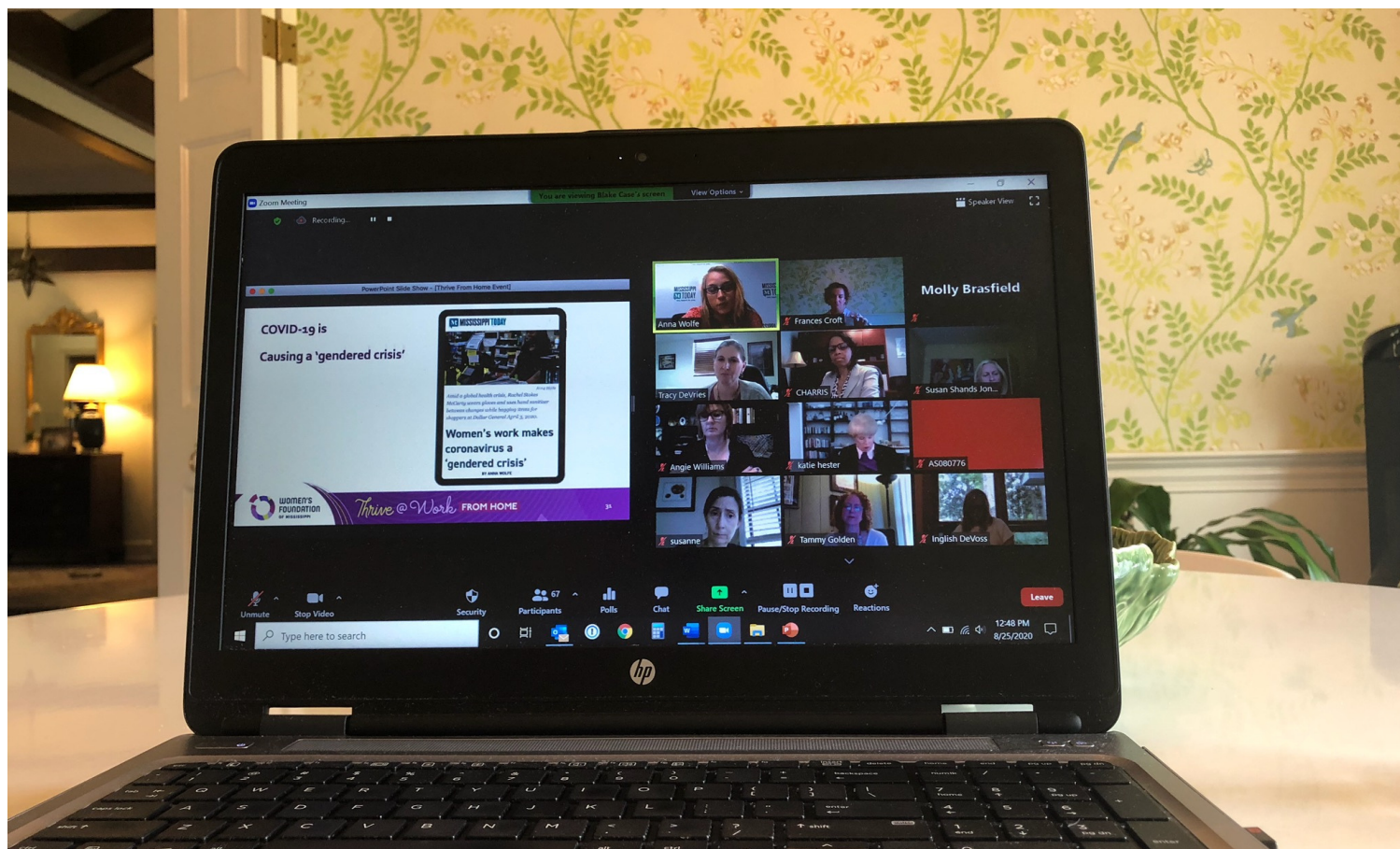
LINDSAY THOMAS DOWDLE



CAROL HARRIS



ANNA WOLFE



Thank You Thrive @ Work [From Home] Sponsors!

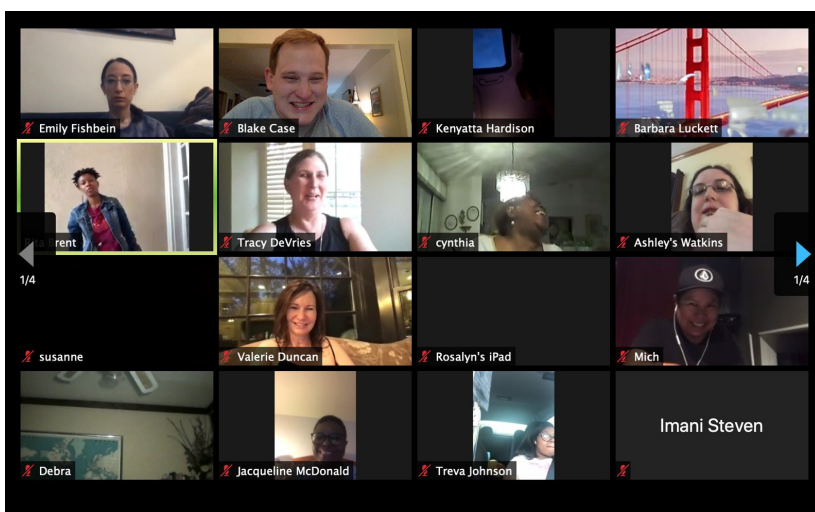
Thrive @ Work 
FROM HOME

THANK YOU
Event Sponsors



Community Education & Engagement

Being disconnected and separated from our normal routines and lives was something that we all struggled with in 2020. Not being able to go to school, work, and visit family and friends took a toll on all of us. With that in mind, and to invest in one of our state's real talents, we partnered with Rita Brent to offer an online comedy show. Hundreds of people registered to join us online on May 2, and we all benefited from some good laughs! Additional partnerships between the Foundation and Rita Brent are expected in 2021.



HALF HOUR OF LAUGHS with
RITA BRENT

Saturday
May 2, 2020
7:00 pm

RSVP to reserve your spot!

Via **Zoom** Hosted by the  **WOMEN'S FOUNDATION OF MISSISSIPPI**



To ensure that vital conversations were continuing to happen in the face of the pandemic, and to create virtual community education and engagement opportunities, we developed an online series called, "Thrive in Five" where we host important women to talk about the issues facing women and girls in Mississippi. Our first-ever episode of "Thrive in Five," featured Arekia Bennett, Executive Director of Mississippi Votes. We discussed the 100th anniversary of the 19th amendment, the power of voting women in Mississippi, and the importance of voting in every election. More "Thrive in Five" conversations with other community leaders and influencers are planned for 2021.

2020-2021 Women's Policy Institute

In 2020, WFM recruited the second class of the Mississippi Women's Policy Institute, a policy advocacy and leadership training fellowship for Mississippi women. Through a competitive application process, seven women were chosen as fellows. The Women's Policy Institute amplifies the voices of women throughout the state by training them to become policy advocates, increasing their capacity to participate in the policy process, building relationships with policymakers as well as advocates in various social justice movements, and leading progressive policy campaigns in Mississippi.



MISSISSIPPI WOMEN'S
POLICY INSTITUTE

2020-2021 Fellows



Vidhi Bamzai



Santee Ezell



Renata Hughes



Tamara Taylor



Arekia Bennett



Catherine Robinson



Jennifer Sasser

Throughout the fall, the WPI fellows received policy advocacy training and networked with other experts, advocates and legislators. This fellowship connects participants with the resources they need to impact policies affecting women and girls. As a cohort, they decide which issues to prioritize and where to direct their efforts. Through an extensive multi-month training course covering legislative practices and procedures, fellows learn to research and develop policy proposals. In 2021, the fellows will follow their proposal through the halls of the Mississippi Capitol. The knowledge and skills they gain will empower them to impact policies as they move forward in their personal, professional, and political lives.



FACT NOT FICTION

FactNotFiction.com offers teens and their parents an easy way to stay informed about sexual health and is aimed at lowering Mississippi's teen pregnancy rate and sexually-transmitted infections (STIs).



600,049
Likes



2,372
Followers



2,346
Followers



3,907 web sessions

*The medical information located at FactNotFiction.com is provided in association with health professionals at the University of Mississippi Medical Center and the Mississippi State Department of Health.

FactNotFiction is a safe place to ask questions and find answers about sexual health.

WE OFFER INFORMATION ON:



STDs / STIs

Browse questions from Mississippi teens with answers from Mississippi medical experts, and submit your own.



BIRTH CONTROL

What is an IUD? Does Mountain Dew kill sperm? We've got comprehensive guides to answer these questions and more.



CLINIC FINDER

Find a confidential clinic near you that can help you meet your healthcare needs.



Communicating with Stakeholders In a Pandemic

One of the biggest challenges during 2020 was making sure that, without our normal in-person gatherings with our stakeholders, partners, and supporters, we were continuing to keep everyone abreast of our vital response work. Early on, our staff quickly worked to ensure our digital tools and capabilities were working efficiently, and throughout the year we were happy to host virtual stakeholder sessions with our staff present to answer questions, provide updates, and solicit feedback. Our ability to adapt to a work-from-home format allowed us to continue our critical work on behalf of women and girls while staying socially-distant and safe.



The graphic features a purple background with concentric circles. At the top center is the Women's Foundation of Mississippi logo, which consists of a circular arrangement of colored segments (red, yellow, green, blue, purple) forming a ring. To the right of the logo, the text "WOMEN'S FOUNDATION OF MISSISSIPPI" is written in white, with "WOMEN'S" and "FOUNDATION" on separate lines and "OF MISSISSIPPI" below them. Below the logo and text, the title "A CONVERSATION WITH STAKEHOLDERS:" is written in large white letters. Underneath this, the subtitle "Updating You On Our Current Efforts" is written in white, flanked by horizontal lines. Below the subtitle, the word "With:" is written in white. To the right of "With:" are four headshots of staff members. Below each headshot is their name and title in white text.

**WOMEN'S
FOUNDATION
OF MISSISSIPPI**

A CONVERSATION WITH STAKEHOLDERS:

Updating You On Our Current Efforts

With:

Tracy DeVries
WFM Exec. Director

Frances Croft; WFM Director
of Strategic Initiatives

Latisha Latiker, WFM
Director of Grant Programs

Blake Case
WFM Marketing Manager



Financials

Our most recent audited financial statements can be found on our website at:

www.womensfoundationms.org/about

We know that it is important to raise funds from donors here in Mississippi, as well as out-of-state, for our annual needs and for our long-term sustainability through investments such as the **Lois Kennedy, Women We Honor Endowment Fund**. Started in 2017 by Board member Donna Barksdale in honor of her mother, the endowment will guarantee our work can continue far into the future.



We were thrilled to launch our new Giving Circle program at the close of the 2019 year, so donors can enhance their investment in Mississippi's women while belonging to a special group of like-minded donors. The Giving Circle runs annually, from January 1-December 31. Members are joining now the **2020 Giving Circle now.**

Thank you TO OUR 2020 GIVING CIRCLE MEMBERS!

We can't wait to share with you what we've got planned for 2021!

Join or renew your membership at womensfoundationms.org.



VISIONARIES

- ♦ Holly Lange

GAME-CHANGERS

- ♦ Anne Forbes

CHAMPIONS

- ♦ Joyce Dortch
- ♦ Susan Phillips
- ♦ Mary Largent Purvis

FRIENDS

- ♦ Margaret Oertling Cupples
- ♦ Therese and Bill Hanna
- ♦ Susan Shands Jones
- ♦ Lesly Gaynor Murray
- ♦ Vonda Reeves
- ♦ Judy Wiener

MEMBERS

- ♦ Linda Allee
- ♦ Lee Anne and Chase Bryan
- ♦ Susanne Carver
- ♦ Frances Croft
- ♦ Deirdre Danahar
- ♦ English DeVoss
- ♦ Tracy DeVries
- ♦ Jan Eastman
- ♦ Evelyn Edwards
- ♦ Jeanne Lockett
- ♦ Natalie Maynor
- ♦ Catherine McNeel
- ♦ Jean Medley
- ♦ LoRose Moore
- ♦ Katie Morrison
- ♦ Monica Northington
- ♦ Katy Pacelli
- ♦ Catherine Patterson
- ♦ Carol Penick
in honor of Donna Barksdale
- ♦ Susan Reeder
in honor of Patricia Stevens
- ♦ Linda Robertson
- ♦ Charu Subramony
- ♦ Laney Watkins

2020 Donors

<i>Anonymous</i>	<i>Margaret Oertling Cupples</i>	<i>Katherine Hall</i>
<i>Alicia Ainsworth</i>	<i>Christine Gray Dale</i>	<i>Shirley Hanshaw</i>
<i>Linda Allee</i>	<i>Deirdre Danahar</i>	<i>Shana Harper</i>
<i>Susan and Vinod Anand</i>	<i>Charmaine Davis</i>	<i>Alferdteen Harrison</i>
<i>Percy Anderson</i>	<i>Jewel Davis</i>	<i>Rodney Hicks</i>
<i>Sarah Anderson</i>	<i>Jorri Davis</i>	<i>Emily Hoff</i>
<i>Angelina Allums</i>	<i>Elizabeth Delgado</i>	<i>Sunny Holliday</i>
<i>Rebecca Sue Armstrong</i>	<i>Rebecca Dennis</i>	<i>Mary E. (Liz) Hudson</i>
<i>Whitney Batteast</i>	<i>Inglish DeVoss</i>	<i>Laurel Isbister</i>
<i>Jana Bell</i>	<i>Tracy DeVries</i>	<i>Rathi Iyer</i>
<i>Eva Bengten</i>	<i>Joyce Dortch</i>	<i>Harvey and Velma Johnson</i>
<i>Megan Bennett</i>	<i>Jan Eastman</i>	<i>Jitoria Jones</i>
<i>Josie Bidwell</i>	<i>Evelyn Edwards</i>	<i>Lauren Jones</i>
<i>Ernestine Bilbrew</i>	<i>Latarsha Edwards</i>	<i>Susan Shands Jones</i>
<i>Dianne Black</i>	<i>Julie Egressy</i>	<i>Adré Jordan</i>
<i>Natella and Charles Boulton</i>	<i>Breeahna Everhart</i>	<i>Medora Justus</i>
<i>Rita Brent</i>	<i>Portia Espy</i>	<i>Debra Kassoff</i>
<i>Janice Brockley</i>	<i>Martha Ferris</i>	<i>Mamie Kettle</i>
<i>Yolanda Brown</i>	<i>Amy and Arty Finkelberg</i>	<i>Holly Lange</i>
<i>Lee Anne and Chase Bryan</i>	<i>Emily Fishbein</i>	<i>Latisha and Tony Latiker</i>
<i>Carol Burnett</i>	<i>Oleta Fitzgerald</i>	<i>Grace and Shinn Lee</i>
<i>Favia Butler</i>	<i>Anne Forbes</i>	<i>Jackie Losset</i>
<i>Kelly Allin Butler</i>	<i>Sunny Fowler</i>	<i>Jeanne B. Luckett</i>
<i>Barbara Byrd</i>	<i>John Fredericks</i>	<i>Dalre Martin</i>
<i>Geneva Cannon</i>	<i>Ricki Garrett</i>	<i>Taylor Martin</i>
<i>Stephanie Carr</i>	<i>Debra Hendricks Gibbs</i>	<i>Heather Currie Martinez</i>
<i>Brigitte Carver</i>	<i>Sarah Dabney Gillespie</i>	<i>Rebecca McCarty</i>
<i>Susanne R. Carver</i>	<i>LaFawn Gilliam</i>	<i>Kit McCoy</i>
<i>Blake Case</i>	<i>Laura Goldberg</i>	<i>Matthew McLeod</i>
<i>Terri and Joey Case</i>	<i>Tammy Golden</i>	<i>Kate McNeel</i>
<i>Janet Clark</i>	<i>Cathy W. Grace</i>	<i>Jean and Tim Medley</i>
<i>Margo Coleman</i>	<i>Sharon Green</i>	<i>Julieta Mendez</i>
<i>Teresa Collier</i>	<i>Maxine Greenleaf</i>	<i>LaToya Merritt</i>
<i>Ashon Crawley</i>	<i>Daniella Griffin</i>	
<i>Casey Creasey</i>	<i>Carmen Gross</i>	
<i>Frances and Justin Croft</i>		
<i>Mary Crump</i>		

Margaret Middleton
Morgan Ashley Miller
Sara Miller
XPhile Montee
LoRose Moore
Madeline Morcelle
Katherine Morrison
Alisa Mosley
Deanne Mosley
Lesley Gaynor Murray
Alicia Netterville
LaDonna Northington
Monica Northington
Kathleen S. O'Beirne
Beth and Steven Orlansky
Katy Pacelli
Virginia Parkinson
Katherine Patterson
Carol and George Penick
Susan Phillips
Veronica Porter
Lisa Potts
Barbara Powell
Mary Largent Purvis
Vonda Reeves
Martha J. Rogers
Holly Samels
Ashley Sanders
Jenny Sasser
Kirsten Seckler
Ann Marie Schott
Ann Shackelford
Dardanella S. Shenefelt
Roslind Sibley
Vicki Slater
Barbara Logan Smith
Sharolyn Smith
Seetha and Asoka Srinivasan
Andrea Stallings

Galean Stewart-James
Akemi Stout
Addie Stover
Charu Subramony
Ward Sumner
Lynette Suttlar
Nelma Thomas
Carolyn S. Townes
Suzanne and Pat Vivier
Jeanette Waits
Shalon Wansley
Shannon Warnock
Laney Watkins
Shanell H. Watson
Glenn W. Watts
Eleanor B. Weaver
Jennifer West
James Wheaton
Judy Wiener
Angie M. Williams
Monica Stewart Wilson
Viva Lea Wilson
Patricia Wise
Margaret A. Wodetzki
Carol Woodson
Deborrah Wray
Mary Wright
Brooke Wyatt
Cynthia Young
Debbie Young
Bianca Zaharescu

2020 Donors

Corporate Donors

- *Atmos Energy*
- *Balch & Bingham LLP*
- *BancorpSouth Bank*
- *Bank of America Charitable Foundation*
- *BankPlus*
- *BlueCross BlueShield of Mississippi*
- *Bradley*
- *Enterprise Holdings Foundation*
- *GI Associates and Endoscopy Center*
- *InMotion Consulting and Coaching*
- *Jackson Free Press*
- *Jones Walker LLP*
- *Kendra Scott, LLC*
- *Mississippi Business Journal*
- *Mississippi Development Authority*
- *Regions Financial Corporation*
- *Ross & Yerger Insurance*
- *Sanderson Farms*
- *Southern Healthcare Agency, Inc.*
- *Trustmark National Bank*

Foundation and Organizational Donors

- *Anonymous*
- *Community Foundation for Mississippi*
- *Delta Sigma Theta Sorority, Inc. (Jackson Alumnae Chapter)*
- *Gay Grantham Charitable Fund at Raymond James Charitable Endowment Fund*
- *Jesse Smith Noyes Foundation*
- *Ms. Foundation for Women*
- *Patsy & Richard Turner Charitable Fund*
- *Rockefeller Philanthropy Advisors*
- *The David and Lucile Packard Foundation*
- *The Phil Hardin Foundation*
- *Tara Health Foundation*
- *The 2Mary's Foundation, Inc.*
- *Susan & Macy Hart at the Tzedakah Charitable Fund of the Community Foundation for Mississippi*
- *W.K. Kellogg Foundation*

2020 Board of Directors

Chair

Vonda Reeves

Chair Elect

Shanell H. Watson

Past Chair

Susan Phillips

Secretary

Mary Largent Purvis

Treasurer

Ashley Sanders

At-Large

Lindsay Thomas Dowdle

Donna Barksdale

Kim Burke

Margaret Oertling Cupples

Evelyn Edwards

Rosalyn Howard

Holly Lange

Grace Lee

LoRose Moore

Norma B. Ojeda

Michelle Owens

Barbara Logan Smith

2020 Staff

Tracy DeVries, Executive Director

Frances Patterson Croft, Director of Strategic Initiatives

Latisha Latiker, Director of Grant Programming

Blake Case, Manager of Marketing and Public Awareness

Susanne Carver, Operations Manager